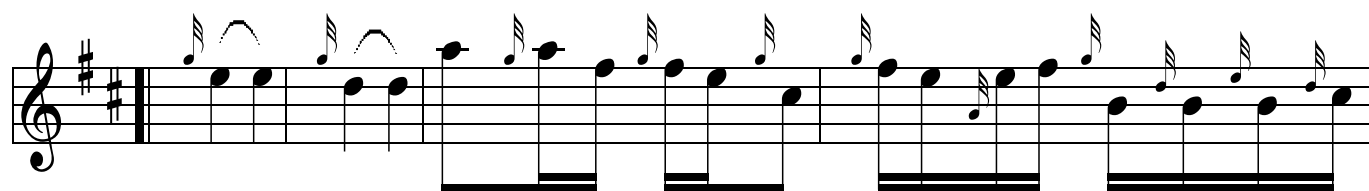
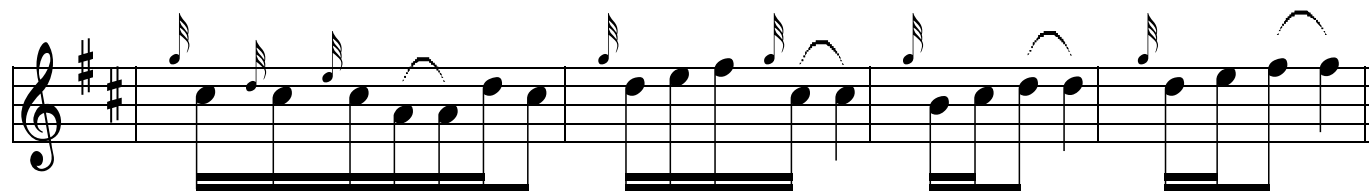
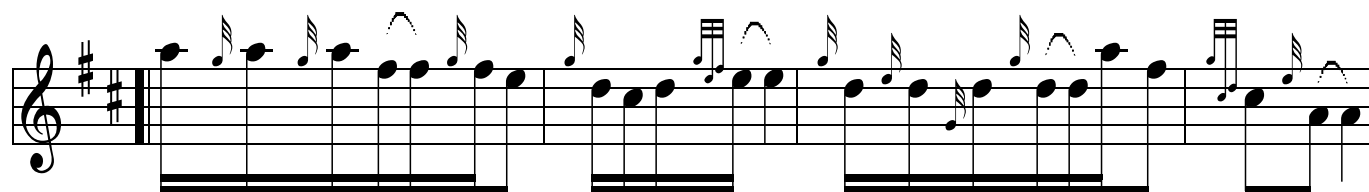


The image displays a musical score for a piper's harmonies. It consists of ten staves of music, all written in treble clef with a key signature of one sharp (F#) and a time signature of 2/4. The first staff begins with a double bar line and a repeat sign. The music is characterized by a steady eighth-note accompaniment in the lower register, often with a melodic line in the upper register. Various musical notations are used, including slurs, ties, and repeat signs, to indicate phrasing and structure. The overall texture is rhythmic and melodic, typical of traditional Scottish piping.

Steam Train to Mallaig - 1st HARMONIES ( Pipe 3 ) page 2 of 2 Mary-Ann MacKinn



Indiana Caledonia Pipe